

KenWood-17 Malibu Towne

200 sq Yards Builder Floor



THE KEY CONCEPT

DESIGN GROUP



THE KEY CONCEPT
DESIGNERS & DEVELOPERS

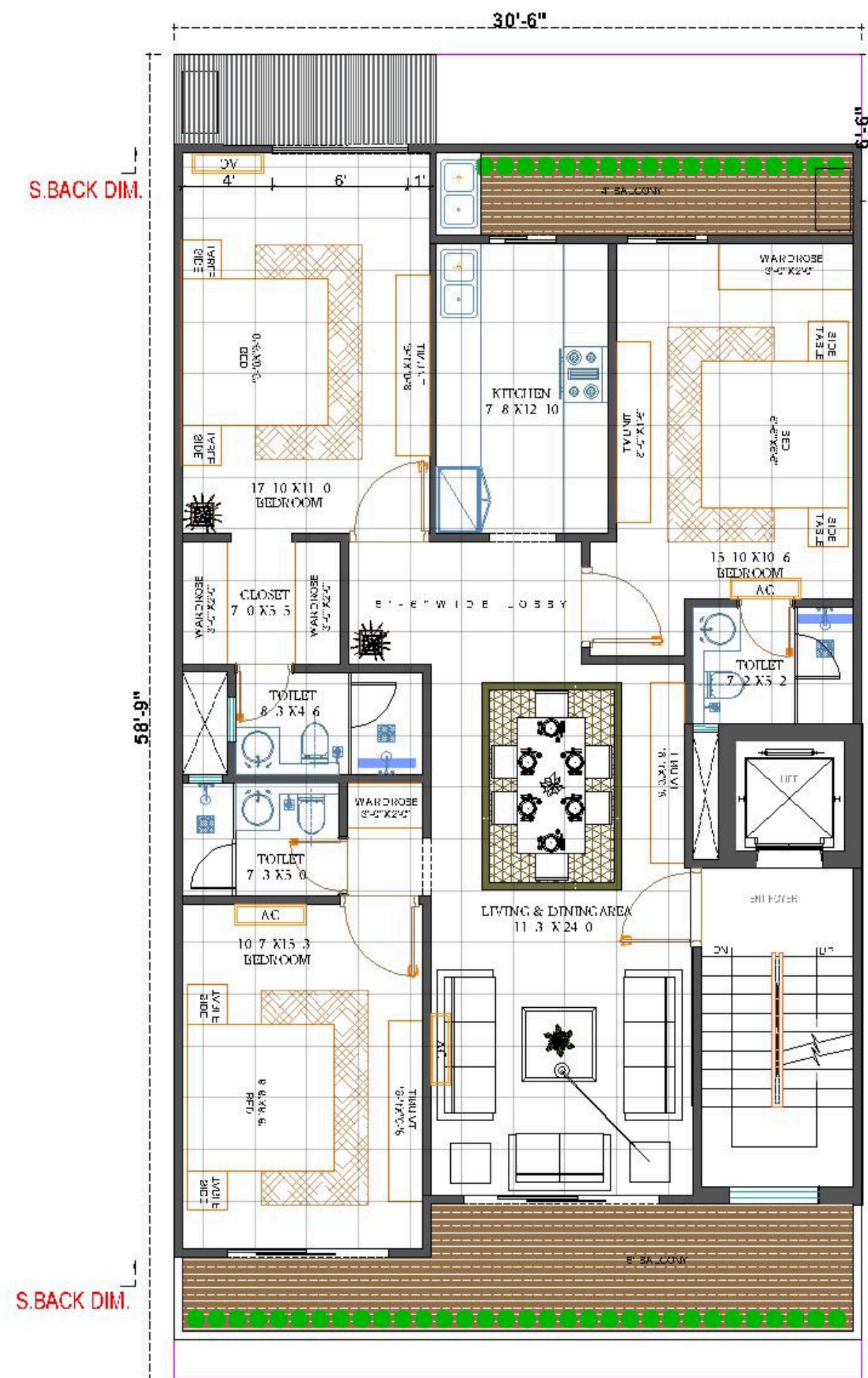
About us

We are a Gurgaon-based partners with a strong portfolio of premium builder floors across Sohna Road. Known for our robust structural detailing, tailored interiors, and immaculate end-to-end delivery, we take pride in crafting homes that truly reflect our clients' lifestyles. With over 50 happy families across the city, we continue to build spaces defined by quality, comfort, and timeless design.



3 BHK Layout

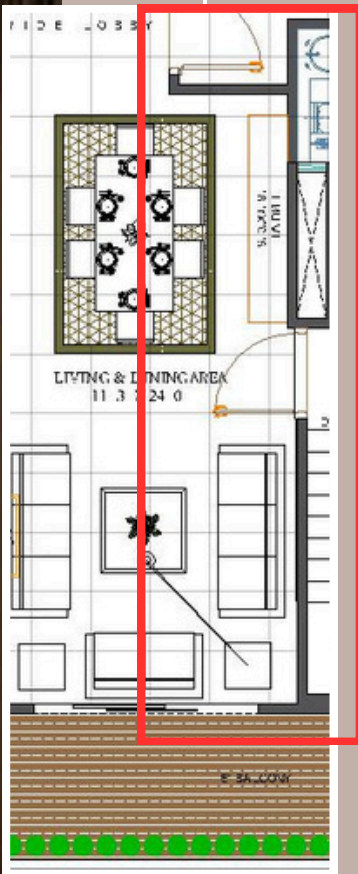
THE KEY CONCEPT



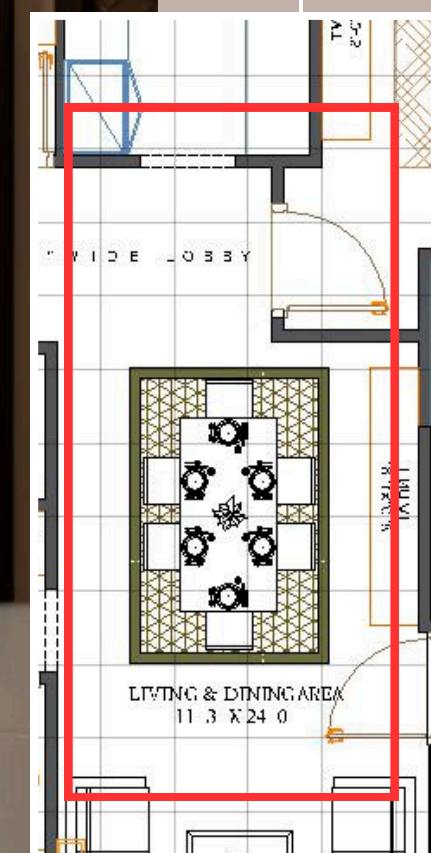
Living Area



Living Area & Dining



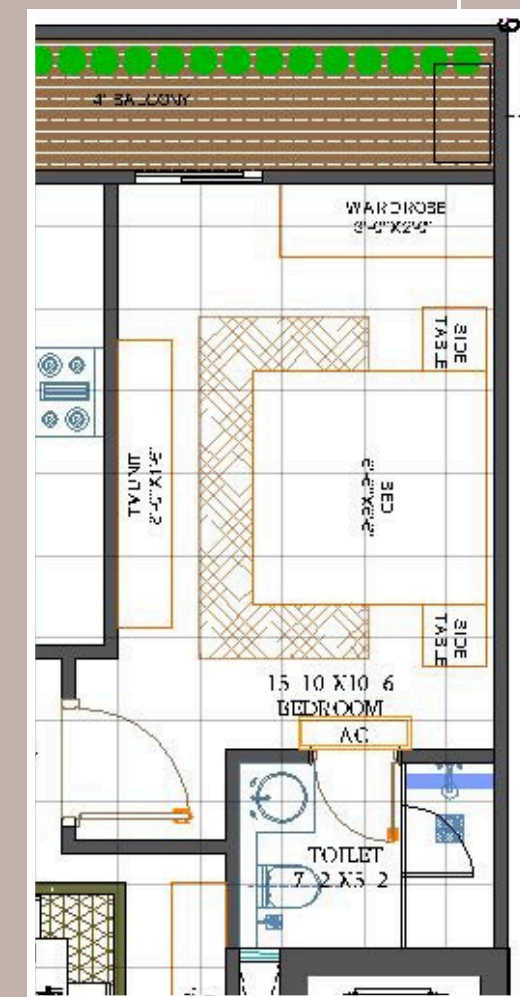
Dining



Bedroom-2



Bedroom-3



Kitchen

Modular Kitchen with dual acrylic finish on HDHMR Board, termite proof.

Specification-

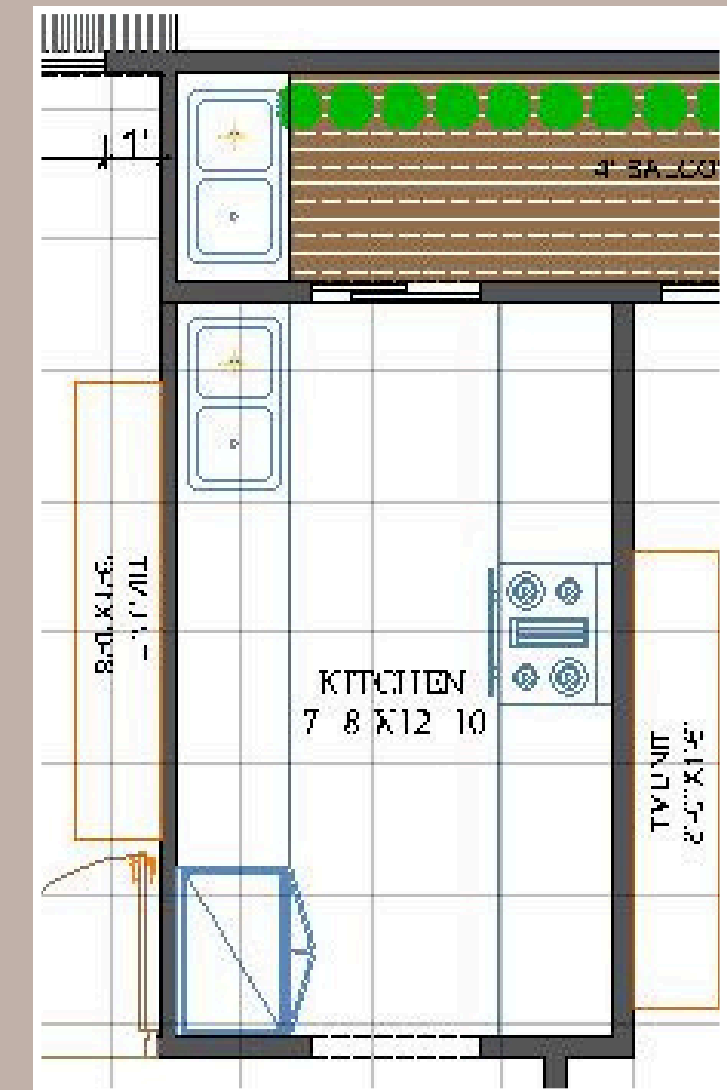
Long Pantry Unit

Sink and tap

Provision for MO Unit

Chimney

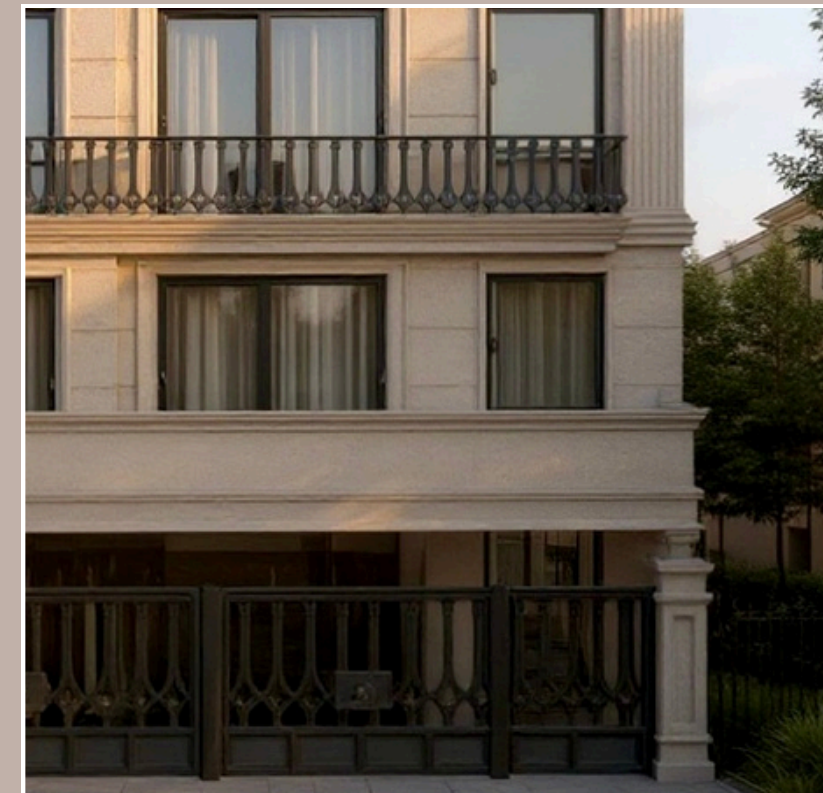
Geyser



Theme & Design Idea

Specification

- Italian marble in living and dining area.
- Kone lift
- Modular Kitchen
- Modular Wardrobes
- Designer Walls
- 4 Split AC units
- 3 units TV Units
- All washroom in Vitrified Tiles and Jaguar Fittings.
- Branded Kitchen Chimney
- Branded lighting with min. 2 year warranty.



KenWood-17
Thank you



THE KEY CONCEPT

DESIGN GROUP

